



**Choroideremia**  
RESEARCH FOUNDATION

**2025**

**ANNUAL  
REPORT**

SAVING SIGHT IS OUR VISION.

---

---

# Table of Contents

<b>25th Anniversary for the CRF</b>	<b>02</b>
<b>CRF Milestones at a Glance</b>	<b>03</b>
<b>Remembering John Oster</b>	<b>03</b>
<b>2025 Research Funding</b>	<b>04-06</b>
<b>International Advocacy Efforts</b>	<b>07</b>
<b>CHM Natural History Data</b>	<b>08</b>
<b>Spark Acquisition</b>	<b>09</b>
<b>2024-25 CRF Program Highlights</b>	<b>10</b>
<b>2025 CRF International Conference</b>	<b>11</b>
<b>2024-25 Webinars and Virtual Chats</b>	<b>12</b>
<b>Patient and Family Resources</b>	<b>13</b>
<b>CHM Podcast Features</b>	<b>14</b>
<b>CHM Family Accomplishments</b>	<b>15-20</b>
<b>Team CHM and Team CHM Merchandise</b>	<b>21</b>
<b>Financial Summary</b>	<b>22</b>
<b>2024-25 Board of Directors</b>	<b>24-25</b>
<b>2024-25 Science Advisory Board</b>	<b>26-29</b>
<b>Staff</b>	<b>30</b>
<b>Thanks to Our Fundraisers!</b>	<b>31</b>
<b>Donors</b>	<b>32-33</b>
<b>Giving and Eye Donation Program</b>	<b>34</b>

---

# 25th Anniversary for the CRF

The Choroideremia Research Foundation (CRF) was founded in 2000 with one mission: to find a cure for choroideremia (CHM). While a cure has not yet been achieved, the past 25 years have been marked by incredible progress, funding groundbreaking research, advancing clinical trials, and building a strong, connected community of patients, families, and advocates.

From its humble beginnings as an all volunteer-driven organization, to today, where CRF now has a nearly \$1M budget, with half a dozen full and part-time people on staff dedicated to accelerating research and supporting the CHM family community, we are now closer than ever before to finding the treatment or cure we all seek.

Every action, from attending a conference to hosting a fundraiser or sharing our story, has driven this progress forward.

Your support:

- Funds Breakthrough Research that advances our understanding of CHM
- Accelerates Treatments through clinical trials and innovative studies
- Supports Families with resources, education, and a network of connection
- Provides Critical Resources to guide patients and caregivers

Every dollar moves us closer to a world without CHM.

As we celebrate 25 years, we invite you to be part of the next chapter. Every donation, every fundraiser, every share helps scientists, patients, and families every step of the way.

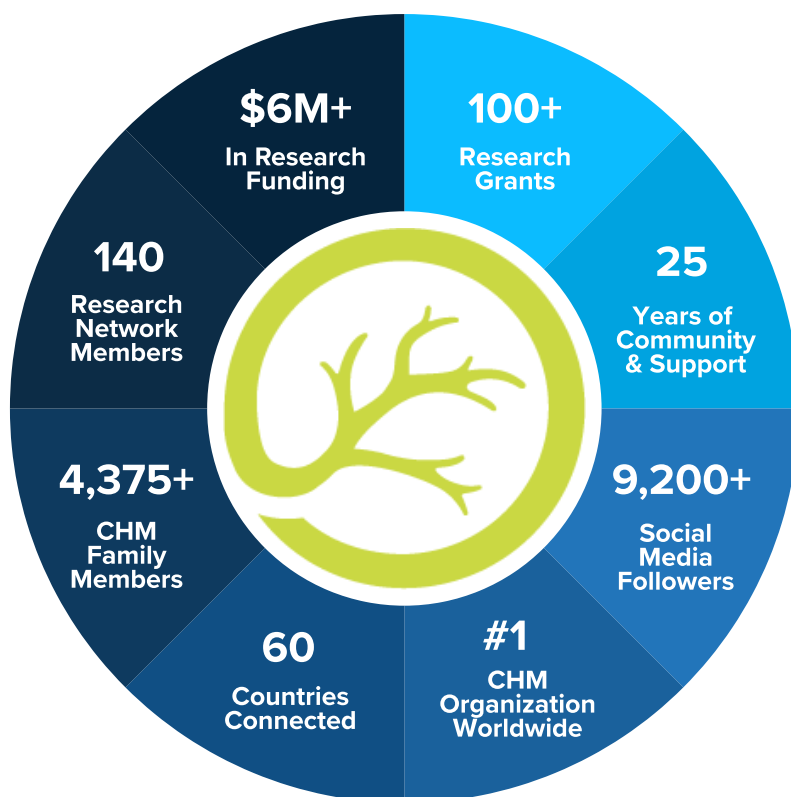
**Neal Bench**  
CRF President

**Kathi Wagner**  
CRF Executive Director

**Jess Thompson, MD, MS**  
CRF Chair, Science Advisory Board

# CRF Milestones at a Glance

Since 2000, CRF has achieved incredible milestones: 25 years of community and support, \$6M+ in research funding, over 100 research grants, 5,770+ CHM family members, connections with CHM families in 60 countries, 140 members in the International Choroideremia Research Network (ICRN), 9,200+ social media followers, and being the #1 CHM organization worldwide.



## Remembering John Oster

This year, we honor the life and legacy of John Oster of Rochester, NY, a founding member of the CRF and a cherished part of our CHM family. John played a pivotal role in formally establishing the CRF and, together with his family, remained a steadfast supporter through decades of volunteer leadership and financial generosity.



Over the years, John served the Foundation in many capacities, including as an officer, treasurer, and president, helping to guide CRF through key moments of growth and impact. In 2025, CRF created the John Oster Leadership Research Award in his honor, recognizing his enduring commitment to advancing sight-saving research.

---

# 2025 Research Funding

Since 2000, the CRF has awarded over \$6 million in research grants to advance treatments and a cure for choroideremia (CHM). We support foundational studies that provide essential tools and knowledge, innovative projects that open new pathways for diagnosis and therapy, and promising initiatives that face traditional funding barriers, including seed studies and early-career investigator projects. Through this approach, CRF fosters scientific discovery and a strong research community, bringing us closer to effective treatments and a cure.

## Recent grants have included:



**Researcher:** Kathleen Boesze-Battaglia, PhD, Professor of Biochemistry and Biophysics

**Institution:** University of Pennsylvania, Philadelphia, PA

**Project Title:** Assessment of Metabolic Homeostasis in the CHMnull/wtmouse, implications for novel therapeutic interventions

---



**Researcher:** David Gamm, MD, PhD, Director, McPherson Eye Research Institute; Associate Professor, Ophthalmology and Visual Sciences

**Institution:** University of Wisconsin, McPherson Eye Research Institute, Madison, WI

**Project Title:** Optimization of AAV vectors for ace-tRNA readthrough therapy for choroideremia

---



**Researcher:** Shalhevet Izraeli, MSc Student

**Institution:** Hadassah-Hebrew University Medical Center, Jerusalem, Israel

**Project Title:** RANDY WHEELLOCK RESEARCH AWARD  
Using suppressor transfer RNAs to correct CHM nonsense mutations

---



**Researcher:** Dror Sharon, PhD; Division of Ophthalmology and Shay Ben Aroya, PhD, Faculty of Life Sciences



**Institution:** Hadassah-Hebrew University Medical Center, Jerusalem, Israel and Bar-Ilan University, Israel

**Project Title:** In-vitro and in-vivo RNA editing of CHM nonsense mutations, year 2

---



**Researcher:** Jessica I.W. Morgan, PhD, Director, Advanced Retinal Imaging, Center for Advanced Retinal and Ocular Therapeutics Perelman School of Medicine

**Institution:** University of Pennsylvania, PA

**Project Title:** Structure-Function Relationships at a Cellular Level in Choroideremia using Adaptive Optics Scanning Light Ophthalmoscopy – funded in partnership with the Penn Orphan Disease Center Million Dollar Bike Ride 2025

---

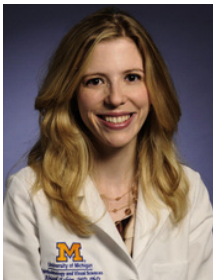


**Researcher:** Sena Gocuk, OD, MPhil, PhD, FAAO, Department of Optometry and Vision Sciences

**Institution:** University of Melbourne, Australia

**Project Title:** Advanced Genomic Analysis of Female Carriers of X-linked Retinal Disease

---



**Researcher:** Abigail Fahim, MD, PhD, Clinical Assistant Professor, Ophthalmology and Visual Sciences

**Institution:** Kellogg Eye Center, University of Michigan, Ann Arbor, MI

**Project Title:** Mechanisms of Defective RPE Cell Autophagy in Choroideremia

---



**Researcher:** Thomas Barker, PhD, Professor of Biomedical Engineering, Cell Biology and Pulmonary and Critical Care Medicine, Schools of Engineering and Medicine

**Institution:** University of Virginia, Charlottesville, VA

**Project Title:** Deep Learning Discovery of Molecular Glues that Preserve Sight in Choroideremia

---

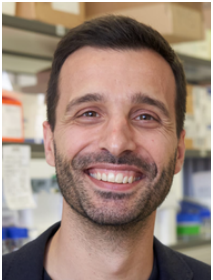


**Researcher:** Miguel Seabra, MD, PhD and Pedro Antas, PhD, Global Eye Initiative

**Institution:** Champalimaud Foundation, Portugal

**Project Title:** CRISPR-Based Gene Editing for Choroideremia

---



**Researcher:** Ajoy Vincent, MBBS, MS, FRCSC, Associate Professor, Department of Ophthalmology and Vision Sciences

**Institution:** Hospital for Sick Children, Toronto, Canada

**Project Title:** A Classification System for Choroideremia

---



**Researcher:** Robert MacLaren, MB, ChB, DPhil, DSc, FRCOphth, FRCS, FACS, FMedSci, Professor of Ophthalmology

**Institution:** University of Oxford, United Kingdom

**Project Title:** HOLZER FAMILY RESEARCH AWARD - Long term follow-up of choroideremia patients receiving bilateral retinal gene therapy

---



Visit [curechm.org/research/#funded](https://curechm.org/research/#funded) to view a full list of research funded to date.



---

## International Advocacy Efforts

This year has been exceptionally productive and busy for CRF advocacy on behalf of our global CHM community. H Eric Hartman, CRF's Director of Advocacy, led our efforts, which included ongoing collaboration with other Rare and Ultra-Rare disease advocacy groups. Our partners include NORD (National Organization for Rare Disorders), Global Genes, the Haystack Project, and the EveryLife Foundation. By being part of these organizations, we amplify our advocacy on shared issues that impact both national and international regulatory bodies. CRF has also joined as a cosigner to multiple advocacy letters, addressing significant issues influenced by national legislation.

A key focus of our advocacy is vision research. Eric Hartman represented CRF at the 2024 Retina International World Congress in Dublin, where he was a panelist discussing the impact of IRD patient advocacy. In March 2025, he was honored to be one of 45 invitees at the Research to Prevent Blindness (RPB) Vision Research Funding Partnership.

Throughout the year, CRF's advocacy efforts were also prominent at Association for Research in Vision and Ophthalmology (ARVO), and Eric engaged in regular calls with the visually impaired community, ophthalmologists, genetic counselors, and other patient support groups.



---

# CHM Natural History Data

Understanding CHM progression is essential for advancing research and informing clinical trials. In 2024, the Choroideremia Research Foundation partnered with Biogen and RDCA-DAP to make depersonalized CHM natural history data available to qualified researchers worldwide. In 2025, CRF expanded awareness and continued adding to this resource, strengthening global collaboration and helping propel progress toward future treatments.

The following natural history and outcomes studies are currently available through RDCA-DAP:

## **Efficacy and Safety of BIIB111 for the Treatment of Choroideremia (STAR)**

Sponsor: Biogen

NCT: NCT03496012

## **A Study to Assess Choroideremia (CHM) Health Outcomes**

Sponsor: Biogen

NCT: NCT04750785

## **Natural History of the Progression of Choroideremia Study**

Sponsor: Biogen (NightstaRx)

NCT: NCT03359551

## **Natural Disease Progression in Participants With Choroideremia**

NCT: NCT04795206

If you are a researcher who seeks to access this data, please create an account here: <https://portal.rdca.c-path.org/>

---

# Spark Acquisition

In 2025, Choroideremia Research Foundation (CRF) acquired all Spark Therapeutics, Inc. assets related to its SPK- 7001 gene therapy for treating Choroideremia (AAV2-hCHM-101) following the decision to discontinue the program.

The acquired assets include intellectual property rights, biological materials, orphan drug designations, Phase I/II clinical trial data, and Natural History Study data.

Spark's clinical trial evaluated the safety and preliminary efficacy of subretinal CHM gene therapy in 15 participants affected by choroideremia (CHM), an inherited retinal disease. One eye was treated and the other eye served as a control. The safety goal was met. Some participants have self-reported stabilization in the treated eye prompting CRF to analyze the five-year follow-up data.

CRF and University of Virginia Faculty members, Drs. Tom and Shannon Barker, and CRF Chief Science Officer Dr. Mike McConnell are facilitating a University of Virginia Biomedical Engineering Student Capstone Project titled "Clinical Trial Data Analysis: Finding endpoints that matter to choroideremia patients." The student team is evaluating data from ophthalmic measurements completed during Spark's clinical trial.

Given the slow and uneven progression of CHM, it is difficult to distinguish therapeutic effects of a treatment from the normal variability between treated and untreated eyes over the relatively short span of a typical clinical trial. This evaluation of clinical data from Spark's trial is being done in tandem with an evaluation of related natural history data of clinical observations for over 125 CHM patients in order to identify ophthalmic endpoints that can establish vision stabilization, or improvement, following therapeutic treatment. CRF aims to publish these findings to inform regulatory action and approval in any potential, future research or clinical trial related to Spark's gene therapy or other treatment.

CRF thanks its volunteer team members and its collaborators at Spark, Roche, University of Pennsylvania, and the Children's Hospital of Philadelphia for their support in this first-of-its-kind asset transfer and data review.

---

# 2024-25 CRF Program Highlights



Reagan Devinney was promoted to Development and Communications Manager, becoming the second full-time employee in CRF history. Since joining CRF in 2021 as Digital Marketing Coordinator, she has helped expand the Foundation’s digital presence and community engagement. In her new role, she leads donor relations, communications, and fundraising initiatives supporting progress toward a cure.



CRF also welcomed Mike McConnell, PhD, as Chief Scientific Officer. A neuroscientist specializing in stem cells, genomics, and rare diseases, Dr. McConnell brings leadership experience from institutions including the University of Virginia, Harvard Medical School, and the Salk Institute. He leads efforts to advance CRF’s research strategy, accelerate funding, and share scientific progress with the community.



In May 2025, the Choroideremia Research Foundation hosted the annual International Choroideremia Research Network (ICRN) Breakfast at the Association for Research in Vision and Ophthalmology (ARVO) meeting in Salt Lake City, Utah. This gathering brought together nearly 100 leading CHM researchers, clinicians, and industry partners to share updates, discuss emerging science, and strengthen collaborations across the global research community. The event continues to serve as an important platform for advancing dialogue around CHM research priorities and fostering connections that accelerate progress.

# 2025 CRF International Conference

The 2025 CRF International Conference was held June 25–28 at the Radisson Blu Mall of America in Bloomington, Minnesota, bringing together nearly 200 CRF family members, researchers, clinicians, and friends for several days of education, connection, and community building. We are grateful to our sponsors, Ray Therapeutics, Kiora Pharmaceuticals, the Thompson Family, and Nanoscope Therapeutics, as well as our event donors, Ed Hoffman, Andrew Karas, and Kayla Schiller, whose generosity helped make this gathering possible.



---

# 2024-25 Webinars and Virtual Chats

In total CRF has over 345 total videos posted with over 73,100 views on its Cure CHM YouTube Channel to date! Visit [youtube.com/curechm](https://youtube.com/curechm) to subscribe to updates today!

## 2024-2025 webinars included:

- Improving Vision with Non-Invasive Bioelectricity
- Retinal Oxygen Metabolic Function in Choroideremia
- Photoreceptor Structure-Function Relationships in CHM
- Outcome Measures in CHM Clinical Trials
- The PRIMA Implant for Vision Restoration
- Family Planning Options with CHM
- Meta Glasses - Are They Right for You
- New Optogenetics Clinical Trial for CHM Patients
- Intro to AI for CHMers: What is It? How it Helps?
- Making Fun with AI: Music, Art, and Creative Tools
- Accessible Gaming with the CRF
- Accessibility Features for the iPhone and How to Use Them
- A New Approach to Restoring Vision: The Protein-Based Artificial Retina
- Patient Advocacy: Why It Matters for the Choroideremia Community
- Have You Ever Thought About a Guide Dog? CHMers Discuss Pros and Cons

CRF also offers a variety of monthly opportunities to socialize online with fellow CHM family members via Zoom.

## Regularly scheduled events include:

- Music Trivia
- Sports Trivia
- Beer Appreciation Club
- Book Club
- Moms of CHMers Chats
- Parents Chat (New!)
- CHMer Convos (Twice a Month! Europe and North American Time Zones)

All are welcome! Contact [corymacdonald@curechm.org](mailto:corymacdonald@curechm.org) to register for future events!

---

# Patient and Family Resources

One of the primary foundations of the CRF is its' network of support groups, resources and opportunities to network and connect and with CHM Family members, both one on one and in small groups. These include:

## PRIVATE FACEBOOK GROUP

---

Over 1,800 CHM Family from around the world network, share experiences, support and resources. It's a great place to ask questions and get feedback from people who know what you are going through. Search for "Choroideremia (CHM)" on Facebook to subscribe to this private group.

## WHATSAPP

---

For those not on Facebook, the CRF also has a private group via WhatsApp. Contact Cory MacDonald at [corymacdonald@curechm.org](mailto:corymacdonald@curechm.org) to get the subscription link.

## PATIENT TOOLKIT

---

On our website, you can learn about Home Adaptation, Lifestyle, Technology and other subjects related to a life with CHM. It can be found in the "For Patients and Families" section of the CRF website.

## PRODUCTS AND SERVICES

---

Also in the "For Patients and Families" section, we have listings for suggested lighting, mobility and a host of other products and services to aid you in your day to day living.

## CONNECTING WITH CHM FAMILY MEMBERS

---

Would you like to connect one on one with other CHMers, Carriers or Spouses of CHMers in your area? Contact Cory MacDonald to find out who may be near you.

More Information and Support: If you would like more information on any of the above, or would just like to speak to another CHMer, give us a call at 800-210-0233, extension 1.

# CHM Podcast Features



**Off the Beaten Path with Sedona Dave**  
Season 1 | Episode 7: Featuring Eric Hartman, CRF Director of Advocacy.



**Collectively CoeXisting**  
Episode 67: Featuring Dr. Sena Gocuk, an expert on X-linked IRDs and female carriers.



**Collectively CoeXisting**  
Episode 68: Featuring Michelle Holbrook, mom of two boys with CHM.



**Through Our Eyes**  
Season 3 | Episode 37: Featuring Sheldon Lewis, CHMer, who shares his journey.

## Genetic Disorders of the Eye

*How Patient Advocacy Accelerates Research in Rare Diseases*

**Guests:**  
Dr. Abigail Fahim  
Dr. Christopher Moen



**Biomedical Frontiers – Genetic Disorders of the Eye**  
Season 3 | Episode 15: Featuring Dr. Abigail Fahim and Dr. Christopher Moen, this episode explores CHM and other IRDs.



**Blind and Refined**  
Hosted by John Powers, CHMer, who shares candid stories about his journey living with CHM—from denial to acceptance.

# CHM Family Accomplishments and News



Lifelong Cardinal and CHMer Donny Nadeau from Minnesota received the CSC Lifetime Achievement Award for his 29-year career in athletic communications, recognized for his exceptional service, storytelling, and lasting impact at Saint Mary's University and within the MIAC community.



The Kostecki family of Illinois launched an online fundraiser in support of the CRF, rallying friends, loved ones, and their wider community to advance CHM research. Their efforts raised more than \$20,000.



Alis Moen, wife of CRF Chief Medical Officer Dr. Chris Moen, of Delaware, ran the London Marathon to support CHM research in partnership with Fight for Sight.



Get Hooked is a six-part docuseries following four queer millennial women as they explore catch-and-release fishing with diverse guides. Season 1, Episode 2 features CHMer Dave Furgoch from Canada and angler Rick Klatt as the group fishes for catfish in Arnprior and discusses experiencing the world through other senses when blind.

# CHM Family Accomplishments and News



Camille “Cami” Harp, CHMer, ran his first half-marathon, the NYCRUNS Brooklyn Experience, raising over \$11,000 for CHM research!



“Losing my sight doesn’t mean losing my vision.” Matt Tait, CHMer from Kent, UK, shares his journey with choroideremia in a feature by The Telegraph. His story highlights resilience, adaptation, and advocacy, raising awareness of CHM and the importance of ongoing research.



Legally blind with only 20% vision, Jay Simple returned to competition after more than a decade and won two medals at the Welsh Championships. “If I can do it without being able to see anyone’s face or two steps in front of me, you can too,” he says, inspiring all with his resilience and determination.



The Stich family celebrated Tim’s 30th birthday with an online fundraiser, raising over \$4,100 to support critical CHM research.

# CHM Family Accomplishments and News



The 7th Annual Special Vision Golf Outing took place at Valley View Farm Golf Course in Saginaw, MI. CHMer Dave Rumpel helped lead the event, which raised funds for both Special Olympics Michigan and the CRF while bringing golfers together for a day of fun, food, and community.



The annual CHM Family Picnic was held in Springfield, MA, hosted by Cory and Karen MacDonald. Twenty-five CHM family members came together to celebrate connection, support, and the cherished traditions that make this gathering special.



Blake Wehr represented Team CHM at the Smith Point Triathlon in Shirley, NY, raising CHM awareness by wearing his Team CHM shirt.



Paralympian Pieter du Preez, affectionately known as “Supa Piet,” has claimed silver in the men’s H1 time trial at the UCI Paracycling World Championships in Ronse, Belgium.

---

# CHM Family Accomplishments and News



Tom du Preez represented the CHM community on an international stage at Australia's premier CrossFit® event, the 2025 Down Under Championship in Wollongong, NSW. Competing in the Adaptive Upper/Vision division, Tom earned 1st place overall, showcasing extraordinary strength, determination, and resilience.



Jackson Thompson represented Team CHM at the Bear Lake Brawl Half Triathlon in St. Charles, ID, showing strong support for the CHM community.



Rogier Dorsman, a CHMer and S11 Paralympic swimmer, continued his remarkable career at the 2025 World Para Swimming Championships in Singapore, winning multiple medals, recognized as one of the world's top visually impaired swimmers.



A few CHM community members enjoyed a Monday–Friday cruise from Port Canaveral to the Bahamas, organized by Laura Long, a CHM carrier and Franchise Partner at Expedia Cruises.

# CHM Family Accomplishments and News



Jess Thompson, MD, and his cardiac practice sponsored the Mesa Sprint Tri in Arizona, helping raise CHM awareness.



CHMer and CRF Director of Advocacy H. Eric Hartman showcased his latest bas-relief sculptures, first formed in clay and cast in plaster, at Art for Art's Sake at WRBH Studio in New Orleans, returning 35 years after his first exhibit there.



Course to a Cure, organized by friends of CHMer Cole Schroeder, brought together 84 golfers and 12 volunteers at Westchester Golf Course, OH. The event raised over \$16,000 to support CHM research, awareness, and community, with plans to make it an annual tradition.



Michelle Holbrook and her family hosted their sixth CHM FUNdraiser, featuring a morning workout at Good Movement Studio in Park City, UT, and an auction.

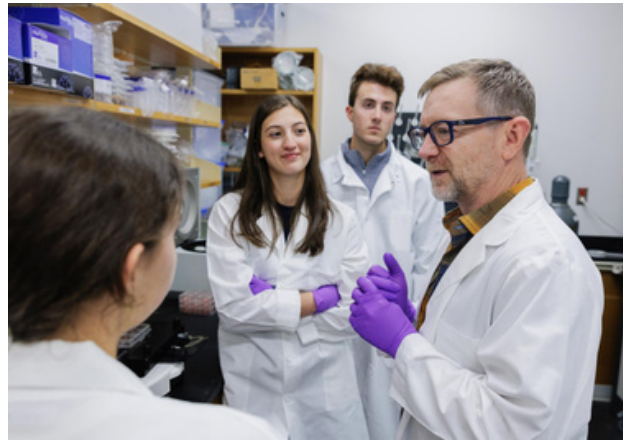
# CHM Family Accomplishments and News



Tara Andrus Nordgren and her family organized the Nordgren Family 5K in Weiser, ID, raising over \$10,000 for the Choroideremia Research Foundation through the support and dedication of their community.



For the 13th consecutive year, the Laudenbach family participated in Run For A Reason, MN on Thanksgiving morning raising over \$4,500 for the CRF.



When his son was diagnosed with choroideremia, UVA professor and CRF Research Committee member Dr. Tom Barker refocused his lab's work to slow the disease's progression.



Joanna, Matt, and Michelle Dabiero ran the Alicante Marathon in Spain, with Joanna proudly wearing her Team CHM shirt to help share the CRF mission internationally.

# Team CHM

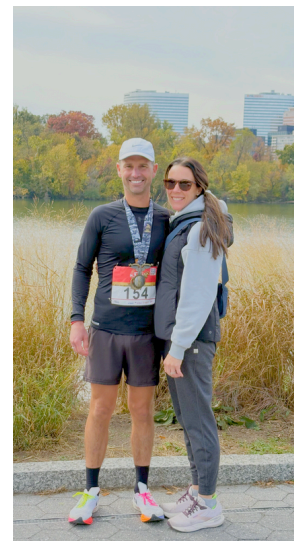
## 2025 12th Annual Million Dollar Bike Ride (MDBR)

Team CHM raised over \$18,000 for the CRF during the 2025 MDBR, an event hosted by the Penn Medicine Orphan Disease Center.



## 2025 50th Anniversary Marine Corps Marathon

17 runners represented Team CHM in the 50th Marine Corps Marathon held in Washington, D.C., and Arlington County, Virginia and raised over \$27,000 to benefit the CRF!



## 2025 TCS New York Marathon

31 runners and 4 deferrals represented Team CHM in the TCS New York City Marathon and raised over \$116,000 to benefit CRF!



## Team CHM Merchandise

Support CHMers by purchasing Team CHM gear, including t-shirts, mugs, water bottles, caps, and wristbands. Every purchase helps fund vital research and raise awareness while building community. Visit [www.curechm.org](http://www.curechm.org) to shop.



# Financial Summary

## Fiscal Year Financials

			Fiscal Year	Prior Year
	Without Restrictions	Research Restricted	2025	2024
<b>Revenue</b>				
Direct Public Support	\$696,537	\$ 235,578	\$932,115	\$660,391
Investment Income, Net	\$11,937	\$19,066	\$31,003	\$38,659
<b>Total Revenue</b>	<b>\$802,052</b>	<b>\$162,880</b>	<b>\$964,932</b>	<b>\$699,050</b>
<b>Expenses</b>				
Patient and Family Education and Advocacy			\$231,693	\$186,525
Research Funding			\$418,922	\$363,127
Fundraising			\$97,887	\$86,578
Management			\$70,544	\$53,248
<b>Total</b>			<b>\$819,056</b>	<b>\$689,478</b>
<b>Net Assets</b>				
Total Net Assets Without Donor Restrictions			\$364,797	\$381,801
With Donor Restrictions				
• Research Restricted			\$64,517	\$86,451
• Peter G. Boone Endowment Fund			\$527,373	\$342,559
Total Net Assets With Donor Restrictions			\$591,890	\$429,010
<b>Total Net Assets</b>			<b>\$956,687</b>	<b>\$810,811</b>

(July 1 - June 30)



## 2024-25 Board of Directors



**Neal Bench**  
**President**  
Chapel Hill, NC



**John Trott**  
**1st Vice President**  
Westfield, NJ



**Michael Mullen**  
**2nd Vice President**  
Carmel, IN



**Brian Mayer**  
**Secretary**  
Brookfield, IL



**Liza Zumsteg, CPA**  
**Treasurer**  
West Chester, PA



**Tara Cassidy-Driscoll**  
**Officer at Large**  
Swampscott, MA



**Mary Porter, JD**  
**Officer at Large**  
Berlin, MA

# Directors



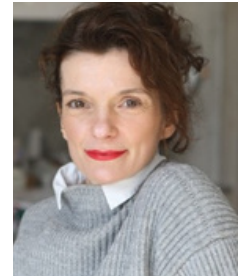
**Brian Counter**  
Champaign, IL



**Thomas Driscoll**  
Swampscott, MA



**Naama Goldman-Einhorn, PhD**  
Tel-Aviv, Israel



**Aurelie Harp**  
New York, NY



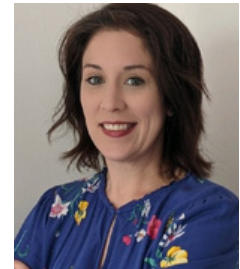
**Bob Hillier**  
Ontario, Canada



**Michael Laengsfeld**  
Friedberg (Hessen),  
Germany



**Jason McKinney**  
Gilmer, TX



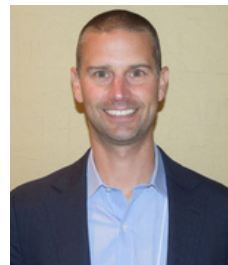
**Rachel Oster**  
Rochester, NY



**Yamil Rosete-Rodriguez**  
New York, NY



**John-Ross Rizzo, MD**  
New York, NY



**Jon Salois**  
Worcester, MA



**Kayla Schiller**  
Mission, KS



**Sarah Thompson**  
Prescott, AZ

**Welcome to Our New Board Member**  
The CRF is pleased to welcome Sarah Thompson as a Director on our Board of Directors.

---

# 2024-25 Science Advisory Board Representatives



**Jess Thompson, MD, MS**

Chair, Science Advisory Board, Choroideremia Research Foundation; Cardiothoracic Surgeon, Yavapai Cardiac Surgery

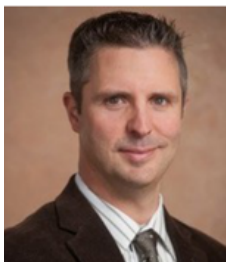
Prescott, AZ



**Mike McConnell, PhD**

Chief Scientific Officer, Choroideremia Research Foundation

Charlottesville, VA



**Chris Moen, MD**

Accomplished Rare-Disease Patient Advocate & Healthcare Operations Executive; Chief Medical Officer, Choroideremia Research Foundation

Wilmington, DE

---

# 2024-25 Science Advisory Board



**Tomas Aleman, MD**

Director of the Retinal Structure and Function Laboratory, Perelman Center for Advanced Medicine, Perelman School of Medicine, University of Pennsylvania

Philadelphia, PA



**Lauren Ayton, B. Optom, PhD, GCOT, FAAO**

Principal Research Fellow Optometry and Vision Sciences at the University of Melbourne.

Melbourne, Australia



**Brian Ballios, MD, PhD, FRCSC, DABO**

Assistant Professor in the Department of Ophthalmology and Vision Sciences at the University of Toronto

Toronto, Canada



**Kathleen Boesze-Battaglia, PhD**

Professor, Assistant Dean for Academic Initiatives, Department of Basic and Translational Sciences, University of Pennsylvania, School of Dental Medicine

Philadelphia, PA



**Kim Edwards, PhD**

Scientist, David Gamm Lab, Waisman Center (VCRGE), University of Wisconsin, Madison

Madison, WI



**Malia Edwards, PhD**

Academic Vice Chair, Science Advisory Board, Choroideremia Research Foundation; Assistant Professor of Ophthalmology, Johns Hopkins Medicine

Baltimore, MD



**Rachel Huckfeldt, MD, PhD**

Academic Chair, Science Advisory Board, Choroideremia Research Foundation; Physician and Surgeon and Director, Inherited Retinal Degenerations Fellowship, Massachusetts Eye and Ear; Assistant Professor of Ophthalmology, Harvard Medical School

Boston, MD



**Jasleen Kaur Jolly, DPhil, MSc, BSc (Hons), MCOptom**

Senior Clinical Research Fellow, Oxford Neuroscience

Cambridge, England, UK



**Vasiliki Kalatzis, PhD**

Inserm Research Director, Vision Team Institute for Neurosciences of Montpellier, France

Montpellier, France



**Maureen McCall, PhD**

Professor & Vice Chair for Research, Department of Ophthalmology & Visual Sciences, School of Medicine, University of Louisville

Louisville, KY



**Ruchi Sharma, PhD**

Senior Staff Scientist, Ophthalmic Genetics and Visual Function Branch, National Eye Institute

Bethesda, MD



**Dror Sharon, PhD**

Sharon Lab, Department of Ophthalmology, Hadassah-Hebrew University Medical Center

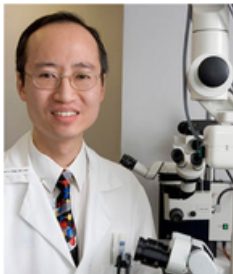
Jerusalem, Israel



**Divya Sinha, PhD**

Scientist I, David Gamm Laboratory, Waisman Center, University of Wisconsin

Madison, WI



**Stephen Tsang, MD, PhD**

Professor of Ophthalmology and Professor of Pathology and Cell Biology, Columbia University

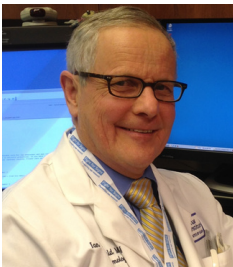
New York, NY



**Ajoy Vincent, MBBS, MS**

Staff Ophthalmologist, Ophthalmology and Vision Sciences; Medical Director, Visual Electrophysiology Unit; Associate Scientist Genetics and Genome Biology Research Institute, The Hospital for Sick Children

Toronto, Canada



**Emeritus Science Advisory Board**

**Ian MacDonald, MSc, MD, CM**

Professor Emeritus, Department of Ophthalmology and Visual Sciences, University of Alberta; Director, Department of Ophthalmology, University of Montreal

Alberta and Montreal, Canada

---

## Full-Time Staff



**Kathi Wagner**  
**Executive Director**  
Tampa, FL



**Reagan Devinney**  
**Development & Communications Manager**  
Shawnee, KS

---

## Part-Time Staff



**H. Eric Hartman**  
**Director of Advocacy**  
New Orleans, LA



**Cory MacDonald**  
**Engagement Director**  
Springfield, MA



**Mike McConnell, PhD**  
**Chief Scientific Officer**  
Charlottesville, VA

---

# Thanks to Our Fundraisers!

Jacob Adams  
Kyra Battaglia  
Serge Bechade  
Leah Beckett  
Todd Beckett  
Neal Bench  
Kathy Boesze-Battaglia  
Carol Brennan  
Craig Brown  
Drew Burt  
Caroline Calhoun Looney  
Deborah Carney  
Ron Charan  
Mary Coghill  
Samuel Cole  
Daniel Czubak  
Christopher Dean  
Mark DeVoe  
Rob Driscoll  
Tom Driscoll  
Geri Jo Duda  
Maurice Eida  
Stefani Fenelon  
Ethan Forman  
Lindley Friedman  
Colleen Geldermann  
Kristen Ging  
Nicholas Goetz  
Jennifer Goldstein  
Jessica Grant  
Michael Hanlon  
Camille Harp  
Hannah Hoffman

Damon Holbrook  
Michelle Holbrook  
Cindy Hoppe  
Douglas Jones  
Sue Kazmierczak  
Susan Kelly  
Patrick Kennedy  
Michelle Kimberland  
Christina KostECKI  
Emily Lange  
Janet Laudenbach  
Matthew Laudenbach  
Michael Längsfeld  
Cory MacDonald  
James Maneri  
Peter McConnell  
Graham McOsker  
Betty Newcomb  
Victoria Nickerson McFarlane  
Thomas O'Flaherty  
Charles Oster  
John Oster  
Geraldine Pierson  
Mary Porter  
Megan Richardson  
June Rosland  
David Rumpel  
Jon Salois  
Jami Seagle  
Leon Shelhamer  
Clare Stich  
Chelsea Tiedemann  
Kurt Tiedemann

Stephen Tiedemann  
Timothy Tiedemann  
Kelsie Tiffany  
Mark Van Deren  
Stefan Vraspir  
Elizabeth Wagner  
Hailey Wehr  
Brynne Wesselman



## Donors

### \$25,000+

Anonymous  
Danny and Sharyl Boren  
George Collias  
Pamela Holley  
Eric and Whitney Holzer  
Keith and Kristy Payne  
Bernice Pettit Estate  
Mary Porter

### \$10,000-\$24,999

Anheuser-Busch Matching Gifts Program  
Todd and Dr. Leah Beckett  
Facebook Matching Gifts  
Google Matching Gifts Program  
Hugh and Nancy Hutchison  
Mastercard Matching Gifts Program  
Microsoft Matching Gifts Program  
Ray Therapeutics  
Marty and Marilyn Reiss  
Yamil Rosete Rodriguez  
John and Dominique Trott  
John and Barbara Vraspir

### \$5,000-\$9,999

Neal and Jeanette Bench  
Glyn and Betsy Boone  
Family of Charles Crocker Fund  
Ms. Gina Hartigan/Kantata  
Kiora Pharmaceuticals  
Bernard and Shari Nutter  
David Rumpel  
Safe Family Foundation  
Salois Family Fund  
Dr. Jess and Sarah Thompson  
Tito's Handmade Vodka  
Town Fair Tire Foundation

### \$2,500-\$4,999

Apple, Inc.  
Atlas Distributing, Inc.  
Stuart and Meaghan Banks-Innes  
Bruce and Jane Bench  
Keith and Barbara Cameron  
Charles Gleason and Dr. Maryanne Driscoll  
EME Inc.  
Richard and Constance Guerin  
Michael and Michelle Holbrook

## \$2,500-\$4,999

Carlos Loeza Oliva and Franziola Chiu  
Edward and Laura Long  
John and Loron Oster  
John and Sandy Polkowski  
Carol Wheelock  
Within Sight Foundation

## \$1,000-2,499

Joel Anderson  
Wayne and Mary Andrus  
Ares Managment  
William Bauer  
Roland and Margrit Bechade  
Jeff and Julie Benelli  
Stephanie Fowler Benson  
Brose Charitable Fund  
Michael Brown  
Allan and Cora Causey  
Giacomo Cavicchi  
James and Nancy Coghlin  
Susan Cox Estate  
Jeani Cunningham  
Mark and Susan DeFranco  
Tom Driscoll and Tara Cassidy-Driscoll  
Nicholas Goetz  
Greater KC Community Foundation  
Jack Haddad  
Robert and Bettye Halperin  
H. Eric Hartman  
Edward Hoffman and Andrew Karas  
Sean and Sharalyn Hoffman  
Janet Jakobe-Gray  
Tim and Sue Kazmierczak  
Thomas Kim  
Theresa Klaus  
John and Jan Laudenschach  
Rebecca Lemon  
Ben and Caroline Looney  
Cory and Karen MacDonald

## \$1,000-2,499

Megan Markese  
Brian Mayer  
Tim McManus and Sarah Pennington  
Meidinger Family Charitable Fund  
Peter and Victorine Merriman  
Henry Meyer  
Dr. Chris and Alisa Moen  
Dana Moras  
Derek and Aisling Mulcahy  
Michael Mullen  
Nanoscope Therapeutics  
National Football League  
Braden Nunley  
Lin and Laura Ogg  
Dr. Charles and Patricia Oster  
Karl Palasz  
Daniel Peterson  
Pfizer Gift Match  
Louise and Dr. Donald Richards  
Ross and Christie Rizzo  
Ira and Erica Robbins  
Earl and Ellen Russell  
Joe and Joanne Salois  
Kayla Schiller  
Edward and Marion Scott  
Michael Shamah  
Stryker Corporation  
Suzanne Sullivan  
Frank Surface  
Veach Family Fund  
Graham Walker  
Guinevere Walker  
Jeff and Heather Warner

Every effort has been made to recognize donors correctly. We apologize for any omissions or errors. If we need to make corrections to your listing, please call us at 800-210-0233, ext. 1 or email us at [info@curechm.org](mailto:info@curechm.org).

---

# Employer Matching Gifts

Did you know that many employers sponsor matching gift programs that can double or even triple the impact of your donation to the Choroideremia Research Foundation? Matching gifts are a simple and powerful way to maximize your support for choroideremia research at no additional cost to you.

To find out if your employer participates, contact your human resources department or benefits office and ask about their matching gift policy. If your company is eligible, request a matching gift form and submit it with your donation. Once received, CRF will take care of the rest. Some companies also extend matching gift programs to retirees and spouses, further increasing the potential impact.

---

# Planned Giving

Remember the Choroideremia Research Foundation in your estate or with a planned gift to strengthen research efforts to find treatments and a cure so that future generations may never experience vision loss caused by CHM. For more information on making a bequest, gift of stock, gift of life insurance or IRA, please contact Kathi Wagner, CRF's Executive Director, at [kathiwagner@curechm.org](mailto:kathiwagner@curechm.org) or (800) 210-0233, Ext 5.

---

# Eye Donation Program

As an eye donor, gifting your eyes for choroideremia (CHM) research after your death is a heroic act. By studying this donated tissue, researchers will better understand the disease pathology and strive to develop new treatments and a cure for CHM.

To learn more about becoming a CHM eye donor, visit <https://www.curechm.org/research/#eye>



# Choroideremia

RESEARCH FOUNDATION

SAVING SIGHT IS OUR VISION.  
BUILDING HOPE IS HOW WE'LL GET THERE.

23 East Brundreth Street  
Springfield, MA 01109-2110  
(800) 210-0233  
[curechm.org](http://curechm.org)

